

Introducing the **NEW E-Z Ancor**<sup>®</sup>

# Twist-N-Lock<sup>™</sup>

## FEATURES

- ▶ Self-drilling
- ▶ Unique point design provides extra installation stability.
- ▶ Anchor expands for maximum holding power.
- ▶ Hangs up to 75 lbs.\* in vertical 1/2" drywall or 50% more than standard plastic anchors.
- ▶ Seats flush to the wall and does not tear or bubble the surrounding area.
- ▶ Holds fixtures up to 3/4" thick.
- ▶ Small, 1/2" diameter head radius provides maximum opportunity to attach fixtures requiring close-to-edge attachments. (Competitor head radius is a full 1/8" larger)

\* Hangs up to 65 lbs. in vertical 3/8" drywall  
\* Hangs up to 80 lbs. in vertical 5/8" drywall

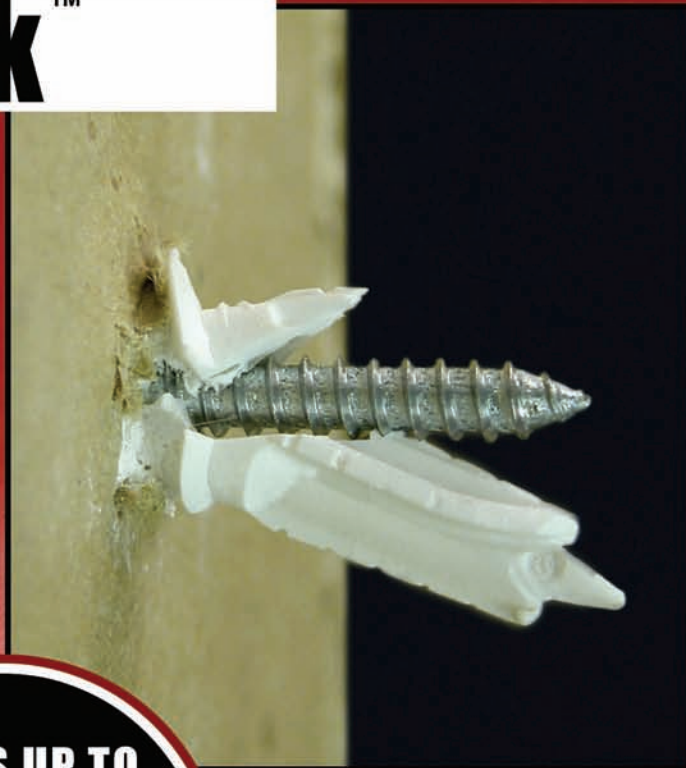
## SCREW LENGTH REQUIREMENTS

Use with standard #8 diameter gimlet point sheet metal screws.

- ▶ **In 3/8" drywall:** Minimum screw length is 1-1/8" plus attachment thickness. Maximum screw length required is 1-7/8" to secure 3/4" fixture thickness.
- ▶ **In 1/2" drywall:** Minimum screw length is 1-1/4" plus attachment thickness. Maximum screw length required is 2" to secure 3/4" fixture thickness.
- ▶ **In 5/8" drywall:** Minimum screw length is 1-3/8" plus attachment thickness. Maximum screw length required is 2-1/8" to secure 3/4" fixture thickness.

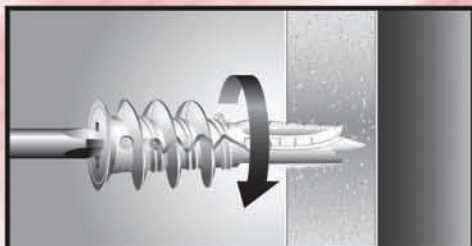
## PART NUMBERS

Bulk Part #5061900 (4,500 pieces per box)  
100 ct. Part #5061902 (Master Ctn. with 10 - 100 Ct. boxes)

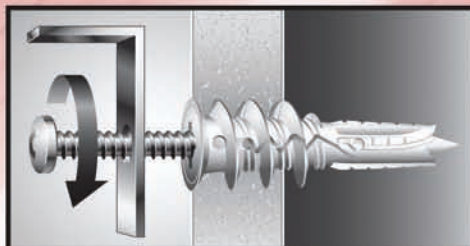


HANGS UP TO  
**75** LBS  
IN 1/2" VERTICAL  
DRYWALL

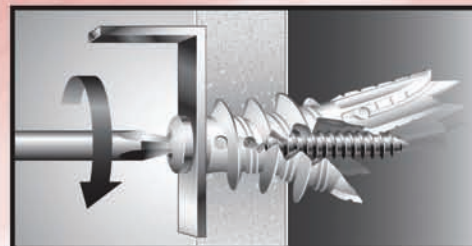
U.S. Patent No.  
7,143,497 & 7,001,124  
Other Patents Pending



1. Place #2 Phillips screwdriver into recess of Twist-N-Lock E-Z Ancor. Press into drywall while turning the anchor clockwise until it is seated flush with the wall.



2. Place fixture in position over installed E-Z Ancor. Insert screw with screwdriver. Tighten fixture in place. Insert #8 diameter screw.



3. Behind the drywall, the E-Z Ancor expands to provide extra support.