

FLASHINGS



SELECTOR GUIDE
2009

DEKTITE®

The Original Flexible Pipe Flashing System



- EPDM material will not crack or break. Has continuous service temperature range of -65°F to +250°F.
- Designed for 1/4" to 18" diameter pipes.
- Pleated cone adjusts to roof pitch and allows for complete flexibility.
- Available in silicone for high temperature applications (-40°F to +350°F).
- Proven resistance to ozone and ultraviolet light.
- 20 Year Warranty

Part No.	Description	Outside Pipe Diameter	Base Diameter	Height	Box Qty
4001910	Mini	1/4 - 1-1/8"	3-1/2"	1-3/4"	20
4003910	#1	1/4 - 2"	4-3/4"	3"	10
4004910	#2	1-3/4 - 3-1/4"	6-1/4"	4"	10
4009910	#3	1/4 - 5"	7-3/4"	4"	10
4035910	#3 Silicone	1/4 - 5"	7-3/4"	4"	10
4011910	#4	3 - 6"	9-1/4"	5"	10
4016910	#5	4 - 7"	10-3/4"	5"	5
4036910	#5 Silicone	4 - 7"	10-3/4"	5"	5
4018910	#6	5 - 9"	12-1/2"	6"	5
4020910	#7	6 - 11"	12-1/2"	6"	5
4025910	#8	7 - 13"	16-1/2"	6"	5
4038910	#8 Silicone	7 - 13"	16-1/2"	6"	5
4028910	#9	10 - 18"	25-3/8"	8"	2
4039910	#9 Silicone	10 - 18"	25-3/8"	8"	2

DEKTITE DIVERTER™

Large Pipe Applications



- Flashes pipe and roof at one time! Reduces labor by 50% vs. metal diverters.
- No ponding or damming. The larger base reduces rain and snow back up.
- No need to cut around pipes. Just, quick, straight lines for the square base.
- Grey EPDM has continuous service temperature range of -65°F to +250°F.
- 20 Year Warranty

Part No.	Description	Outside Pipe Diameter	Base Dimensions	Box Qty
4167910	DF602	2-1/4" - 6"	16" x 14"	2
4168910	DF603	4-1/2" - 10"	19" x 18"	2
4169910	DF605	10" - 16"	27-3/4" x 25"	1
4000910	DF606	16" - 24"	39-1/2" x 35"	1
4158910	Retrofit Diverter	9-1/4" x 16-3/4"	27-3/4" x 26-3/4"	2

DEKTSRIP™

Expandable Edge Flashing That Stretches to Any Shape, Seals, and Stays



- Expandable edge flashing. Wraps around most any profile. Can be stretched up to 25% for additional length and shape needs.
- Many uses: square and round ducts, chimneys, skylights, gutter details, parapets, internal corners, and all transition walls.
- Grey TPE material has a continuous service temperature range of -58° F to +240° F.
- 20 Year Warranty

Part No.	Description	Weight	Fasteners Needed (1-1/2" o.c.)
4157910	7" x 75'	26 lbs.	1200
4155910	9" x 75'	31 lbs.	1200
4156910	12" x 75'	38 lbs.	1200
4171910	18" x 50'	30 lbs.	800

RETROFIT DEKTITE™

Retrofit Pipe Applications

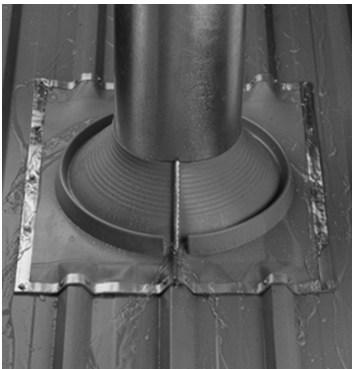


- Specifically designed around no-access, existing, or difficult to access pipes.
- Snaps together in seconds. The built-in crimp means no loose clips or rivets.
- No additional bolts, nuts, or clamps needed.
- Flexible aluminum base conforms to metal profiles.
- Grey EPDM has continuous temperature range of -65°F to +250°F.
- 20 Year Warranty

Part No.	Size	Outside Pipe Diameter	Base Diameter	Height	Box Qty
4029910	801	3/4" - 2-3/4"	6-3/10"	3-1/2"	10
4030910	802	2" - 7-1/4"	10-3/4"	5-3/5"	5
4031910	803	3-1/4" - 10"	14-1/2"	5-4/5"	5

RETROFIT DEKTITE DIVERTER™

Large Retrofit Pipe Applications

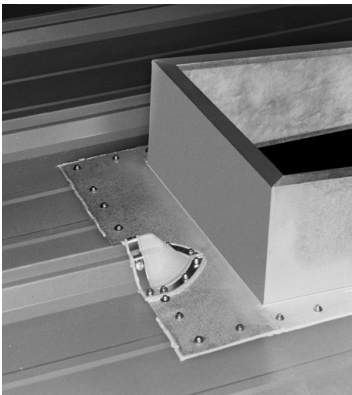


- Wraps around large existing or difficult to access pipes.
- Snaps together in seconds. The built-in crimp means no loose clips or rivets.
- Grips tight and stays tight.
- The supplied aluminum base conforms to metal profiles.
- No ponding or damming. The larger base reduces rain and snow back up.
- Grey EPDM has continuous temperature range of -65°F to +250°F.
- 20 Year Warranty

Part No.	Description	Outside Pipe Diameter	Base Dimensions	Box Qty
4158910	Retrofit Diverter	9-1/4" - 16-3/4"	27-3/4" x 26-3/4"	2

DEK-CAP™

Standing Seam Roof End Cap Flashing - The ONLY Universal End Cap Flashing!



- The only universal end cap flashing. Allows use on left and right handed seams.
- Flexible, corrosion resistant aluminum base conforms to the majority of standing seam roof panels.
- Pre-formed panel profile shape is designed to reduce installation time.
- Fastening locations are clearly indicated for accurate installation.
- Dual underside ridges provide maximum sealing protection.
- Thermal elastomer (TPE) materials provides excellent resistance to ozone, ultraviolet light and extreme temperatures.
- Grey TPE has continuous service temperature range of -58°F to +240°F.
- 20 Year Warranty

Part No.	Description	Box Qty
4146910	Dek-Cap	10

PERFORMANCE DATA

ASTM Method	Test Description	Test Specification	Results
DEKTITE®, DEKTITE® DIVERTER, RETROFIT DEKTITE™, RETROFIT DEKTITE DIVERTER™, (EPDM)			
D412	Tensile Strength (min. psi rating)	1450 psi min.	1537 psi
D412	Ultimate Elongation (%)	350 min.	535
D1171	Resistance to Ozone - min. rating	100 (no cracks)	Passed
D673	Heat Aging - 70 hrs. at 212° F • Change in Hardness (points) • Change in Tensile Strength (%) • Change in Elongation (%)	± 15 max. ± 30 max. ± 50 max.	+8 -4.7 -26
D2137	Low Temperature Brittleness-3 mins. at -40° F	Non-brittle	Passed
D624	Tear Resistance Die C (min.) per inch of width min.	125 lbs. per inch of width min.	130 pounds
UL 94	Flame Resistance	Flame resistance	Passed
DEK-CAP™			
D412	Tensile Strength	1450 psi min.	1500 psi
D412	Ultimate Elongation (%)	350 min.	450
D1171	Resistance to Ozone - min. rating	100 (no cracks)	Passed
D673	Heat Aging - 70 hrs. at 212° F • Change in Hardness (points) • Change in Tensile Strength (%) • Change in Elongation (%)	± 15 max. ± 30 max. ± 50 max.	+3 +2 -3
D2137	Low Temperature Brittleness - 3 mins. at -40° F	Non-brittle	Passed
D624	Tear Resistance Die C (min.)	125 lbs. per inch of width min.	Passed